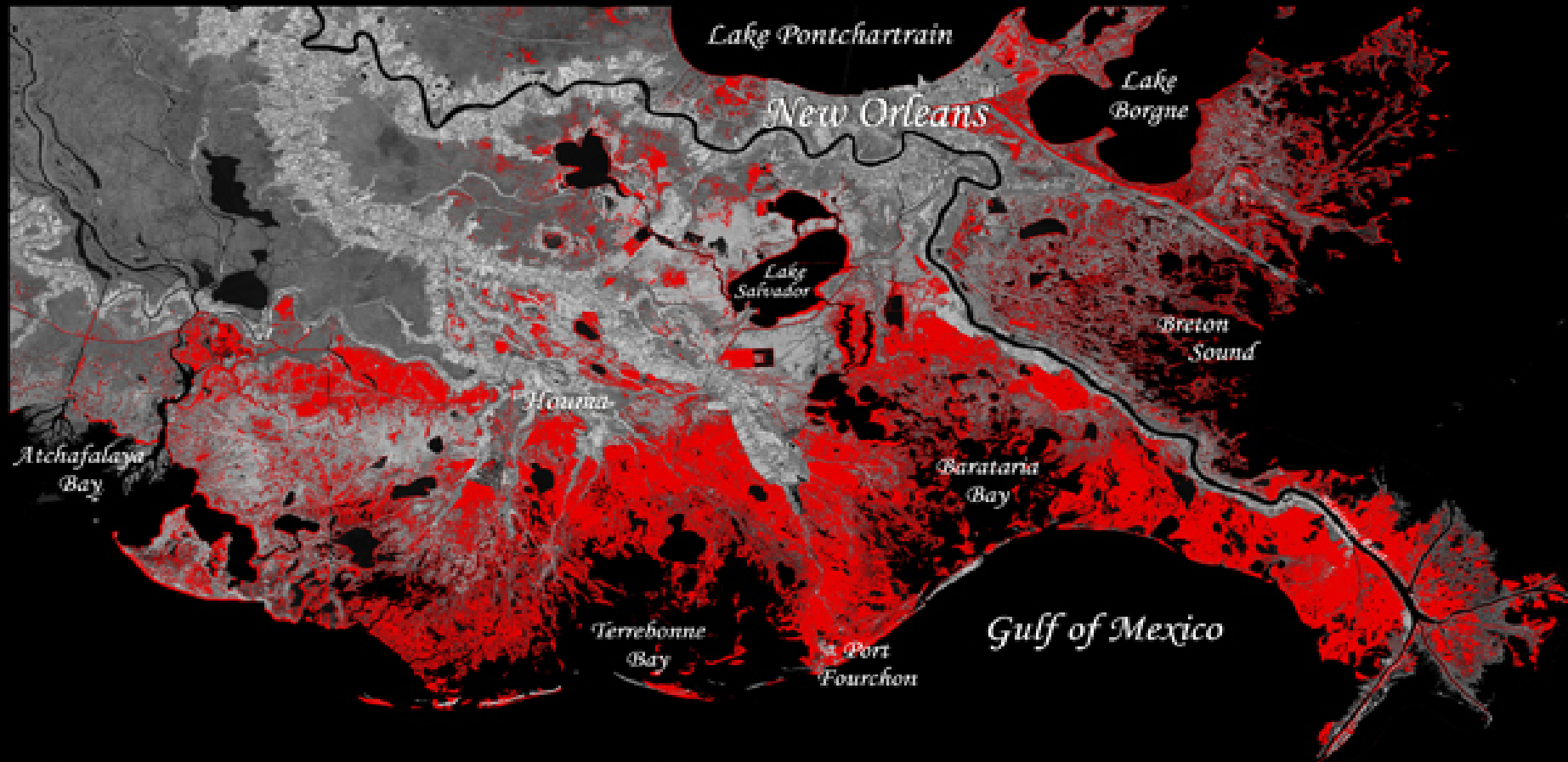


Data SIO, NOAA, U.S. Navy, NGA, GEBCO
Image Landsat
Image NOAA
Image © 2014 TerraMetrics

©2010 Google™

Southeast Louisiana Land Loss

**Historical and Projected Land Loss in the Deltaic Plain*



 Land Loss 1932-2050





2009



2100

Blum, M.D. And H.H. Roberts (2009), Drowning of the Mississippi Delta due to insufficient sediment supply and global sea-level rise, *Nature Geoscience*, 2, 488-491.